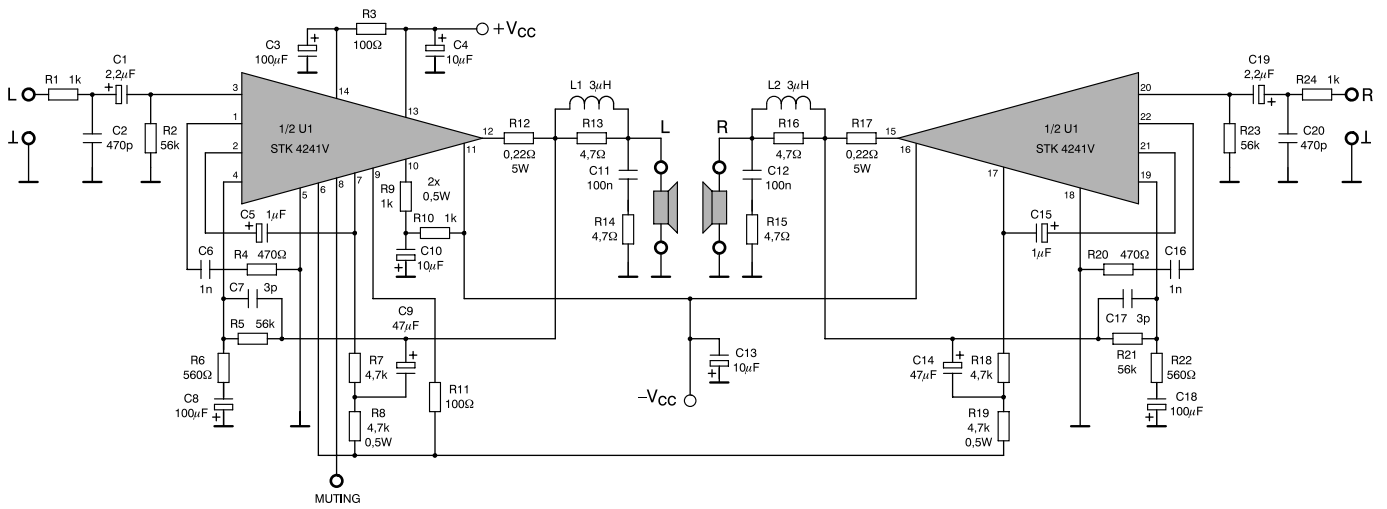
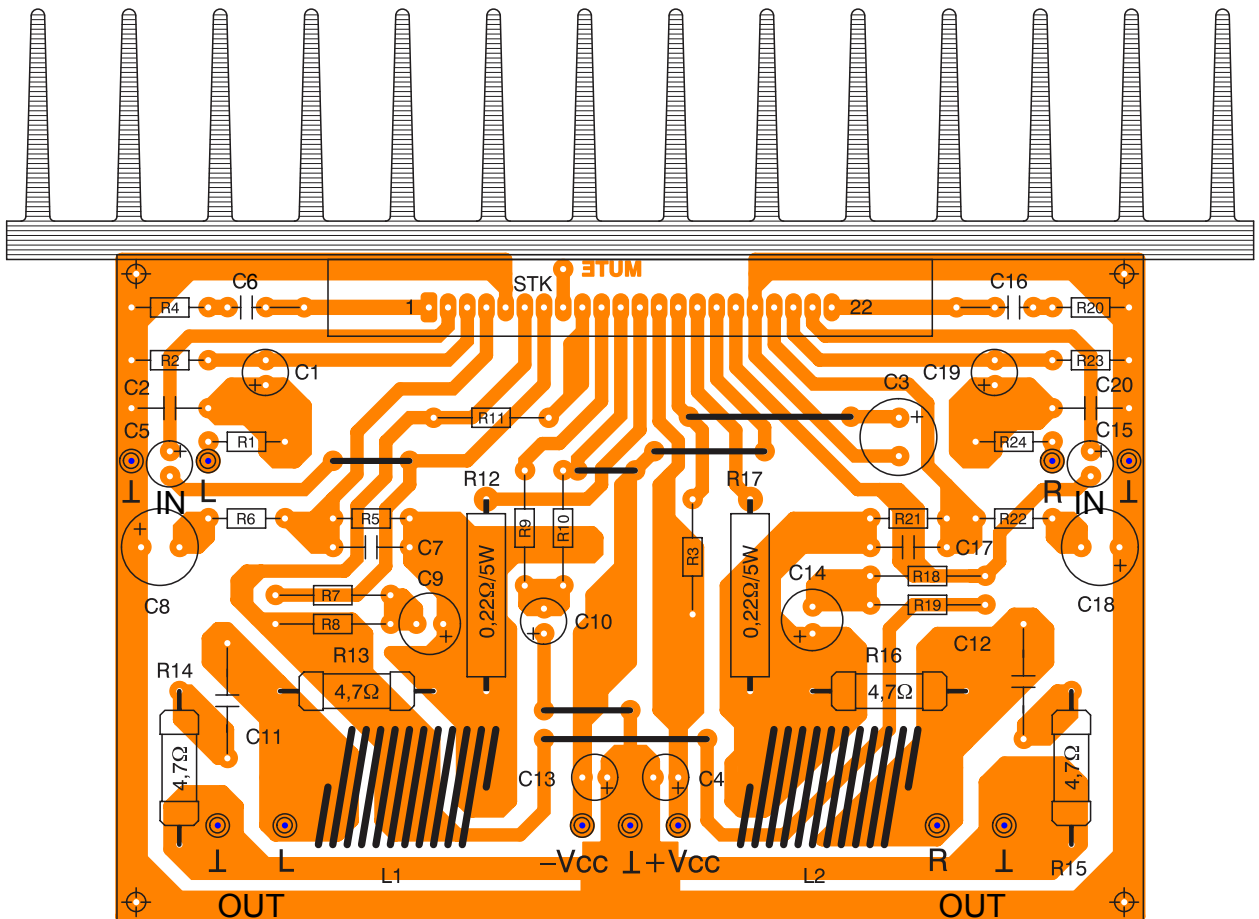
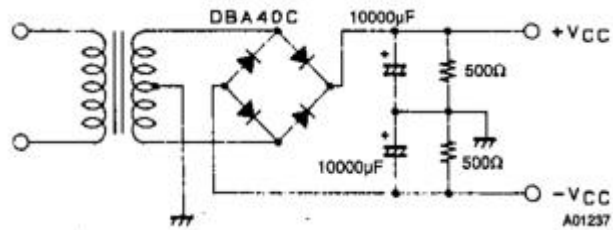


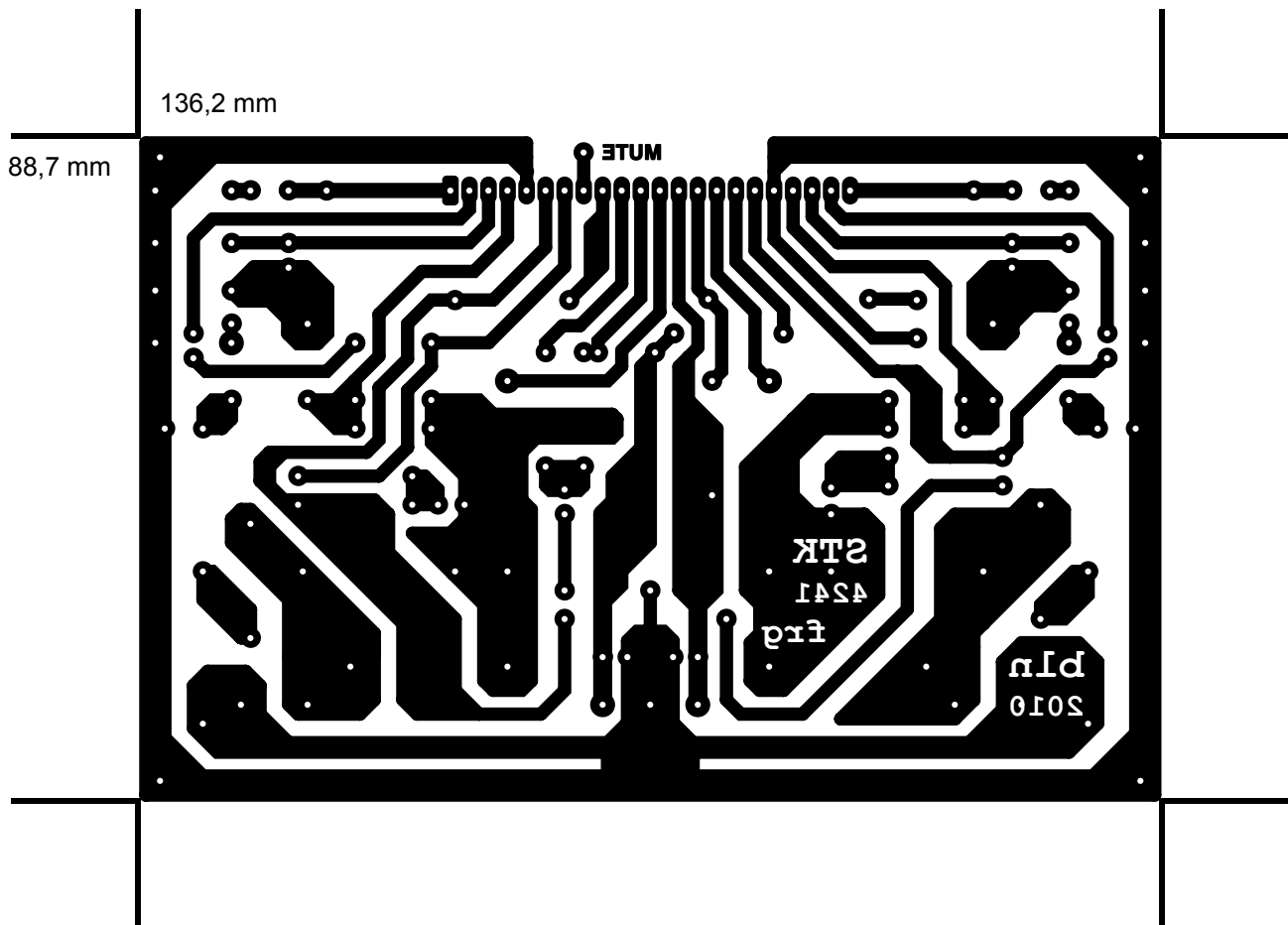
Sample Application Circuit (2x120W min AF Power Amplifier STK4241V)



		4201	4211	4221	4231	4241
V _{cc} max	V	±55	±60	±65	±75	±87
V _{cc}	V	±38	±42	±45	±51	±55
R _L	Ω	8	8	8	8	8
P _o	W	2×60	2×70	2×80	2×100	2×120
THD	%	0,08	0,08	0,08	0,08	0,08
f _g	kHz	>55	>55	>55	>55	>55



Mirror!



BE 10.000/100 Becher-Elko, 41x105mm, 10.000µF/100Volt 13,95 € Reichelt

R1, R24	- 1k		Reichelt	Conrad
R9, R10	- 1k	0,5W		
R2, R5, R21, R23	- 56k			
R3, R11	- 100R			
R4, R20	- 470R			
R7, R18	- 4k7			
R6, R22	- 560R			
R8, R19	- 4k7	0,5W		
R12, R17	- 0,22R	5W	5W AXIAL 0,22	427983 - 62
R13, R14, R15, R16	- 4,7R	1W	1W 4,7	419281 - 62

C1, C19	- 2µ2			
C2, C20	- 470pF			
C3, C8, C18	- 100µF		RAD 105 100/63	
C4, C10, C13	- 10µF			
C5, C15	- 1µF			
C6, C16	- 1nF			
C7, C17	- 3pF			
C11, C12	- 100nF			
C9, C14	- 47µF			

L1, L2 - 3µH d=12mm, l=25mm, n=23 air coil

U1 - STK4241V